



Provoking Love & Good Works

Riddle Me This

Our Shepherds

Phillip Martin

Dennis Folks

Tim Martin

Our Deacons

Glenn Duncan

Tom Hargis

Keith Sabiel

Ministers

All members

Preacher

Edward Benesh

Worship Times

Sunday

Singing 9:45 AM

Bible Study 10 AM

Worship 11 AM

Worship 6:30 PM

Wednesdays

Services 7:30 PM

"I know that you can do all things, and that no purpose of yours can be thwarted.

"Who is this that hides counsel without knowledge?" Therefore I have uttered what I did not understand, things too wonderful for me, which I did not know.

(Job 42:2-3)

"Imagine you were in the middle of the ocean in a sinking rowboat surrounded by sharks. How would you survive?" It is a riddle...a problem, to which there is a logical answer. Do you know what it is? Well, this is the question I found facing me this morning on the back of the box of cereal, as I wiped the sleep from my eyes. I am not sure I was ready for it, but I did fairly well. How will you do?

Let me give you a couple more. "There was an airplane crash and every single person was lost, but two people survived. How is this possible?" How about one more? "I am the part of the bird that is not in the sky. I can swim in the ocean and yet remain dry. What am I?"

Each one of these riddles has one thing in common. Each of them requires that you explore all the possibilities, even those beyond what you might normally consider. The right answer will not always be the obvious one. For instance,

"What months have 28 days?" Did you say February? Great, but all the months have 28 days. To further illustrate, "What is in the middle of Paris?" Well, if I am a "thinking-of-all-the-possibilities-person," then my first question is going to be, "What Paris?" Does the riddler want the middle of the place called Paris? Or, perhaps they want the middle of the word, which would make the answer "r." Bingo, we got it.

You know we are not often good at this sort of thing because we are not used to thinking beyond the present and the probable to see just what might be possible. We get too caught up in our current circumstance, troubles or even victories to see that we are falling short because



we are thinking too small, not seeing that "all things are possible" when we answer through Christ and allow Him to work in us. Now, he is not going to help you solve those riddles, but he will save your soul and make this life one of extraordinary possibilities if you will let Him. Will you? In this day, give all to Him and explore the possibilities he has waiting for you. Oh! The answer to the first riddle is "Quit imagining." The answer to the second is "They were not married." The final answer is "Shadow."



Study Opportunities

Sermon A.M./P.M.
AM-One Way To God?
PM-You're not the boss of me

Sunday Adult Class
Walk Through The Bible

Wednesday Adult Class
Christianity 101

Wednesday Teen Class
The Me I Want To Be
Classes available most Sundays and Wednesdays for all ages.

Young Adults
Sun. - *Walk Through Bible*
Weds. - *Proverbs*

Sunday Morning Ladies Class, Raising Girls—
TBA please see C. Benesh

Weekly Bible Reading
Exodus 39-40
Leviticus 1-18

Online Worship Services
access to live video feed at
www.pinellasparkcoc.org

Daily EDifications
To receive daily lessons from Ed please sign up at
edbenesh@gmail.com.



Pinellas Park Potpourri

Ministry Leaders

Tentative calendars of 2011 events - due by Feb. men's mtg.

Marching for the Masters

MFTM is an outreach group of the Pinellas Park Church of Christ meets on the 2nd and 4th Sundays in the church library following morning services.

Thanks to everyone who helped paint the preacher's house. It's looking great.

L.A.C.E. Membership Drive

The Ladies of Love will be forming a Pinellas Park branch for 2011, which will meet monthly at Pinellas Park. Dues are \$10 a year. The Pinellas Park branch is competing with the Bartow group to see who can get the most members. See Melissa folks for details.

Spiritual Classifieds

Transportation

Bus for the Sonshine Day camp.

Games

Games for Sonshine Day Camp, ages 5 and up. See Beth Martin.



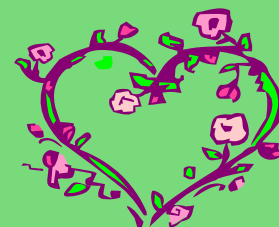
Wanted

Thanks to all who have donated thus far. Your benevolence is Greatly appreciate, especially by our Youth! We could still use a storage cabinet, couple of bean bag chairs, curtains and family friendly DVDs for youth movie nights.



February

- **Today - Sweetheart Banquet**
- **13th - Elders / deacons meeting**
- **15th - Men's meeting**



Our Family Prayer Requests

- Nancy Hargis, is in pain after her recent knee gel shots
- Joetta Lane is home from the Hospital and doing much better
- Marilyn Libby, sister of Carol Axe, Chemotherapy
- Paul Brown, friend of Kathy R. brain cancer.
- Brian Stover, Needing prayers
- Charlie B., Ongoing health issues
- Bethlyn Christman, burns
- Marion Brule, In assisted living
- Donna Lampe is home from Hosp.
- Pam G. 50% artery blockage
- Violet (D. Lampe friend) very ill
- Connie Woods, headaches
- Rick Woods, Bulging discs
- **Connie Woods'**, (Sister) Abnormal mammogram
- Homer and Lou Johnson Nephews, are both ill
- Deborah Pratt, (wife of Bob and Betty's nephew) double mastectomy
- Timothy Hicks, Throat cancer
- Bob Martin, is doing much better and is in rehab after neck surgery.
- Co-worker of Beth Martin Asks for prayers for premature twins.
- Audrey Young, declining health
- Tom Horis, friend of the Gentry's, has had surgery for recurring cancer.
- Carol Axe, fell at home and is recovering from painful bruises
- Christy Claypool (sister of Linda Rossy) recovering from bladder surgery
- Ralph King home improving
- Del Hollingsworth -ulcer & Pneumonia
- Bob Weyandt - home recovering
- Justice, a friend of Carol Axe
- Tim Martin, walking pneumonia
- Faith Herkert, daughter of Nick and Tanika, surgery Feb. 17
- Larry Poteet, surgery Feb. 22
- Reese Moore, friend of the Benesh family, undergoing testing

Weekly Bible Reading

- Sunday Exodus 39-40
- Monday Leviticus 1-4
- Tuesday Leviticus 5-7
- Wed. Leviticus 8-10
- Thursday Leviticus 11-13
- Friday Leviticus 12-15
- Saturday Leviticus 16-18

The questions for this week are posted online at <http://www.pinellasparkcsc.org/adultamclass.php>

Each weeks answer key will be posted on the Monday after we go over the lessons in class.

Men to serve

Song Leaders

Sunday am: Phillip Martin
 Sunday pm: Tom Hargis
 Wednesday: Phillip Martin

Lord's Supper

Bread: Tim Martin
 Cup: Daryl Flint
 Assisting:
 Max Benesh
 Michael Grimmer

Opening prayer

Sunday am: Todd Walden
 Sunday pm: Michael Grimmer
 Wednesday: Bob Perry

Closing prayer

Sunday am: Harold Gentry
 Sunday pm: Timmy Martin
 Wednesday: Todd Walden

Sermons

Sunday Am: Ed Benesh
 Sunday pm: Ed Benesh

'The LORD is slow to anger and abounding in steadfast love, forgiving iniquity and transgression, but he will by no means clear the guilty, visiting the iniquity of the fathers on the children, to the third and the fourth generation.'

(Num 14:18 ESV)

Steadfast Love

"It is good to give thanks to the LORD, to sing praises to your name, O Most High; to declare your steadfast love in the morning, and your faithfulness by night" (Psalm 92:1-2).

So often in the Bible, God is described as steadfast in love and faithfulness, especially in the Psalms. I have often heard a life tied at either end with prayer will not unravel and that we should sandwich our day with praying first thing in the morning and the last thing at night.



Here's an experiment. For the next week, wake up each day and declare God's steadfast love. Know there is nothing that will happen to you that day that He will not equip you to handle, or handle for you. Place the day and what lies ahead in His capable hands, because He is the only one who already knows what the day will entail. He has the plan. We just need to be tuned in to His will so we can follow it and not go off on our own bunny trails.

Then at night, place all the day's happenings in His strong hands. Place your soul and the souls of those you love in the palms with the nail scars in them. Rest easy knowing He is watching over you like a faithful centurion on guard. You are protected. He won't turn his eye away. Nothing will sneak up on you. There is an old Scottish prayer that says, "From ghoulies and ghosties and long-legged beasties and things that go bump in the night, Good Lord deliver us."

Steadfast love and faithfulness- the two things that can sandwich our lives and keep us from unraveling. **Only God's love is** that solid, unchanging and immovable. He is the only one we can truly turn to in our times of need and know He will always be right there.

When our days are set in between steadfast love and faithfulness, whatever happens that day is held together, as are we. His love binds us and His faithfulness guides us and protects us. Our day just goes better because we know Who is in charge. Our sleep is more restful because we know the One who loves us the most never sleeps.

Pinellas Park
church of
6045 Park Blvd.
Pinellas Park, Fl

Phone: 727-544-8920
Preacher :727-723-4519
Preacher email:
edbenesh@gmail.com

Visitors are you in need of help? For directions to our building, roadside assistance , finding points of interest in our community or for emergencies please call: 727-647-6758.

Vital Statistics

Attendance Sunday
Bible Class— 64
A.M.— 93
P.M. - 55
Wednesday - 41
Weekly contribution
\$2481
Contribution Goal
\$2500

Area Events

Let us try our best to support the events of other local congregations.

- See bulletin board.



Visit the Pinellas Park Church of Christ online at www.pinellasparkcoc.org

Questions about ministries?

Preaching Programs

- P. Martin, E. Benesh

Missions

- C. Axe, T. Hargis, M. Drake, K. Sabiel

Sonshine Day camp

- T. Martin

WWCC

- G. Duncan, P. Martin

Youth Ministry

D. Folks

Young At Heart

- B. Perry

Worship Coordination

- T. Hargis, D. Folks

Weds. Eve. Speaking

- W. Robinson

Benevolence

- D. Folks, H. Gentry, W. Robinson

Transportation

- T. Martin

Bldgs. and Grounds

- H. Gentry, K. Sabiel, T. Walden

Education

- B. Perry, D. Folks

Women's Studies Ministry

- N. Gentry, A. Jucknath
- Financial

Dear Visitor...

Welcome! It is hard for us to express in this small space just how blessed we feel by having you visit with us today. You will, no doubt, find that this small welcome address will be followed up by loving conversation with our members, as they introduce themselves and personally welcome you. We are a friendly group who cherish our time together and are always looking to adopt new folks into our family. We want you to feel welcomed and yet, we realize that visiting a church can be overwhelming.

You can expect us to not only make you feel at home and a part of what we do, but also find a willingness on our part to help you understand what we do and why we do it. Some things that are part of our worship may be different than what you are used to, just as some of the things you hear may be different than what you are used to. Rest assured, we welcome all your questions and will be more than happy to explain our reasoning and love for God. We do hope you have enjoyed being with us and come back again soon.

Edward Benesh, Minister

Blessed is the man who remains steadfast under trial, for when he has stood the test he will receive the crown of life, which God has promised to those who love him.
(Jas 1:12)

Pinellas Park church of Christ

6045 Park Blvd.

Pinellas Park, Fl 33781

To:

